



BSD SpecLink®+ Version 3.1 adds new features

The Spring edition of SpecLink+ will have several major software enhancements over Version 3.0. The first new feature is a translator for projects created in the 16-bit software. On the File menu, there is a new command: *Translate Project from 16 to 32*, which is available only when no projects are open. When you click on this command, a dialog box opens that gives you the opportunity to select the 16 bit product you want to translate and the location and file name of the translated project.

One word of caution: *BSD strongly suggests that you update the 16-bit project prior to translating it.* If you try to translate an out-of-date project, you may get a message that certain sections cannot be translated because they no longer exist in the master. You may also need to convert old ARCAT sections to user sections before translating.

The second new feature is especially exciting. You can now create hyperlinks in both directions between any paragraph in SpecLink and a related document in Word. Now, instead of pasting a lengthy document into a SpecLink Project note,

you can create a link at any paragraph that will automatically open Word and the associated document.

To implement a hyperlink to a Word document, you first open the new *Document Link* (DL) status column from the *View* menu. Then open Windows Explorer and find the document to which you want a link. Clicking on the document and holding the left mouse button down, you simply drag

the icon from Explorer and drop it in the DL column at your source paragraph. Within SpecLink+, all you have to do is click on the Word icon in the DL column to open the document in Word.

To create a hyperlink from a Word document to a particular paragraph in SpecLink+, you must have Word 2000 (the feature will not work with earlier versions). Within SpecLink+, place your cursor on the paragraph to which you want a link, and from the Edit menu, click Copy. Then open the Word document, place your cursor at the location you want the hyperlink to appear, and from the Word *Insert* menu, select

#	LVL	N	O	DL	S
0000					<input type="checkbox"/>
0001					<input type="checkbox"/>
0002					<input type="checkbox"/>
0003			<input type="checkbox"/>		<input type="checkbox"/>
0004					<input type="checkbox"/>
0005					<input type="checkbox"/>
0006					<input type="checkbox"/>
0007					<input type="checkbox"/>
0008			<input type="checkbox"/>		
0009					

See *SpecLink+*, page 2

A New Perspective on *PerSpective*™

PerSpective is a new specification system created to specify performance requirements for a building before it has been designed. Developed by BSD for a Joint Venture between the Construction Specifications Institute (CSI) and the Design-Build Institute of America (DBIA), PerSpective is now being adopted by many large institutional and government owners. For example, the U.S. Navy, the U.S. Army Corps of Engineers, Intel Corporation, Chrysler Realty Corporation, and the Church of Jesus Christ of Latter Day Saints are all PerSpective subscribers. PerSpective has also been adopted by the U.S. Department of State for an aggressive program of new embassy construction around the globe.

Although PerSpective was created primarily for design-build projects, many architects and engineers are

See *PerSpective*, page 2

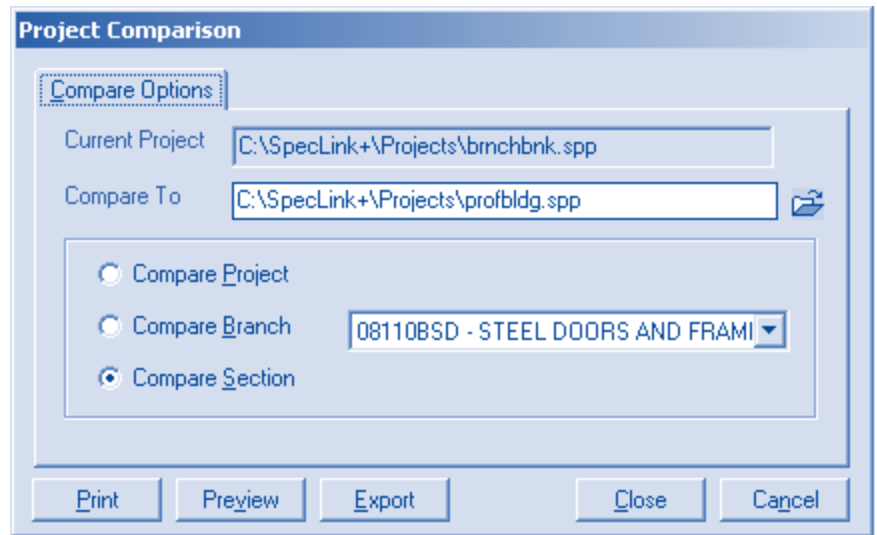
Table of Contents

BSD SpecLink +	pg. 1
PerSpective	pg. 1
R.S. Means Data	pg. 3
CD Browser	pg. 3
Q & A	pg. 4
About Your SpecLink	
Quarterly Update	pg. 5
An Interview With	pg. 7
2001 Training Schedule ..	pg. 8

BSD SpecLink Hyperlink. The link appears in the Word document like this: [\[BSD SpecLink+ Hyperlink\]](#). To activate the link from Word, you place your cursor anywhere within the link, go to the *View* menu and select *BSD SpecLink+ Reference*. This will automatically open SpecLink+ if it is not already running, open the last project you worked on, and move the cursor to the linked paragraph within that project. Of course, these links will work only as long as the files remain in the same locations relative to one another and retain the same file names.

Another new software feature is *Compare Project*. Accessible from the Tools menu, this command opens a dialog box that allows you to compare any other project to the project that is currently active. You also have the option to compare a single section, a branch, or the whole project, as shown in the dialog box.

The comparison is actually a composite document that shows how the current project differs from the compared project. Text that is the same in both projects appears as normal text.



Text in the current document that is not found in the compared document is underlined, and text not found in the current document that is present in the compared document is stricken through. You can preview the compared document or print it, so you can create a record of how two projects differ.

This Compare feature should be very helpful for creating addenda. To use it for that purpose, create a special Temporary project for any sections that need to be updated, and copy those sections to the Temporary project. Then make your changes in the actual

project. When you are finished with your updates, use the Compare Project feature in your project and compare the changed sections to the original versions you copied to your Temporary project. Now, any text you have added is underlined, and any text you have deleted or excluded is stricken out. Print the comparison documents and attach them to your addendum to show the changes clearly.

And last but not least, you can now create custom footers for your requirements report and Table of Contents that differ from those used for the main document.

finding that it is the perfect tool for specifying an owner's needs at the programming and schematic design stages of conventional design-bid-build projects.

Because the software is very similar to SpecLink+, it should look very familiar to our SpecLink+ subscribers. However, the master database in PerSpective is totally different from SpecLink. Structured according to CSI's UniFormat™, the critical performance requirements are assembled into chapters that are organized hierarchically. The seven highest level chapters have titles like Chapter A - Substructure, Chapter B - Shell, Chapter C - Interiors, etc., instead of following the 16 material divisions of MasterFormat™. Requirements in each

of these broad chapters can be supplemented by requirements in lower level chapters that deal with more detailed subjects. For example, Chapter B - Shell is followed by B1-Superstructure, B2-Exterior Enclosure, B3-Roofing, and B9-Other Shell Elements. B2, in turn, is followed by B21-Exterior Walls, B22-Exterior Windows and Other Openings, B23-Exterior Doors, etc. This hierarchical organization allows a user to specify requirements at a very high level or to "drill down" to a very specific level in certain areas of concern.

In addition to the UniFormat performance specifications, PerSpective also includes a volume of short form specifications that follow MasterFormat. Intended to supplement the performance requirements with specific material requirements, the short form specifications also make

PerSpective especially appealing to architects and engineers who need to produce schematic and design development specifications for conventional design-bid-build projects.

BSD handles sales of PerSpective for the CSI/DBIA joint venture, so contact your BSD salesperson if you are interested in a test drive. BSD can send you a CD-ROM and issue an evaluation key that will allow you to use the complete product for a short evaluation period. For more information, call the PerSpective toll free number at 877-893-0896.



2001 R.S. Means Cost Databases Now Available

<u>Cost Databases</u>	<u>~# of Line Items</u>	<u>Cost</u>	<u>Assemblies Databases</u>	<u>~# of Assemblies</u>	<u>Cost</u>
Building Construction Cost Data*	18,600	\$495	Assemblies Rel. 1.0	6,400	\$995
Mechanical Cost Data	16,300	\$495	Mechanical Assemblies	1,500	\$495
Plumbing Cost Data	13,000	\$495	Plumbing Assemblies	1,500	\$495
Electrical Cost Data	12,000	\$495	Electrical Assemblies	1,000	\$495
Commercial Composite Cost Data	41,500	\$1495	Comm. Composite Assemblies	7,500	\$995
Master Union Composite Cost Data	49,200	\$2000	Master Union Comp. Assm.	14,000	\$1495
Facilities Constr. Comp. Cost Data**	39,300	\$1495	Facilities Constr. Comp. Assm.	1,400	\$995
Civil Composite Cost Data	27,500	\$1495	Civil Composite Assemblies	9,400	\$995
Site Work and Landscaping CD	15,800	\$495	Site Work and Landscaping Assm.		\$495
Concrete and Masonry Cost Data	7,000	\$495	Concrete and Masonry Assm.	3,100	\$495
Heavy Construction Cost Data ***	11,800	\$495	Heavy Construction Assemblies	970	\$495
Light Commercial Cost Data	9,500	\$495			
Interior Cost Data	12,000	\$495	Interior Assemblies		\$495
Residential Cost Data	7,900	\$495			
Repair and Remodeling Cost Data	13,300	\$495			

NOTE: Purchase of an Assemblies Database requires the purchase of the associated Cost Database also.

BSD SoftLink® Products at a glance

Over the last year you have probably noticed the evolution of our CD browser into a disk jam packed with information about BSD products and services.

Current SpecLink users are familiar with the CD because it contains the quarterly update of the SpecLink master data. By installing the update over the existing master, projects can be automatically updated without disturbing any user choices, adds, or edits in a project; the easiest update process available!

Subscribers to the BSD CostLink/CM Extended Support Plan (ESP) also receive a new CD whenever the software has an incremental update. This quarter the CD also contains the new 2001 R.S. Means Cost databases.

But did you know that you can also access materials such as the SpecLink catalog listing, CostLink/CM FAQ's, and the User Manuals for both products directly from the CD? The CD-based User Manuals are especially handy to

take along when you travel. No more lugging around of printed materials. Most of the CD documents requires the Adobe Acrobat Reader (available free from Adobe utilizing a link provided on the CD) but the User Manuals are provided in word processing format so that you can easily search for topics of interest.



BSD CostLink/CM



BSD
Building Systems Design, Inc.

BSD CostLink/CM is BSD's flagship cost engineering system for facility design and construction management.

CM has:

- a familiar Windows Explorer-style drag-and-drop interface to commercial or customized cost databases
- project templates, user-definable work breakdown structures and cost categories
- multiple, standard project views: Work Breakdown, Bid Schedule, Contractor, and Resource
- user-definable project views and custom queries for data analysis
- master projects for managing multiple facilities
- foreign currencies and metric measurements
- U.S. Army Corps of Engineers MCACES cost databases included at no extra cost.

Once you have reviewed the printed materials and viewed the demo, you are invited to evaluate the live software. Evaluation notes are provided as an aid in this process. Once you have printed these notes, proceed to the Install BSD Products screen and install the BSD CostLink/CM software.

cost estimating product info

Click on the button next to the document you wish to view in Acrobat.

main
menu

install BSD
products

spec product
info

cost product
info

contact
info

exit
install

Printed materials require the Adobe Acrobat Reader which may take a few moments to open. If nothing happens when you click on the buttons below, please download the Adobe Acrobat Reader available free from www.adobe.com

-  CM Feature List
-  Sample Reports
-  FAQ's
-  Price List
-  Terms and Conditions
-  Evaluation Notes

LinkLine

A BSD SoftLink® Publication

Editor: Peggy Woodall

The LinkLine is published by Building Systems Design, Inc., 1175 Peachtree Street, Suite 1900, Atlanta, GA 30361.

Permission to use excerpts in other publications is granted provided the publisher is notified in advance at (404) 876-4700.

BSD SpecLink, BSD CostLink, and BSD SoftLink are registered trademarks, and BSD CadLink and BSD LinkMan are all trademarks of Building Systems Design, Inc.

Get the latest on BSD by visiting our Web Page at www.bsdssoftlink.com.

Q&A

First, a word in praise of BSD's support team!

"Thank you, the SpecLink team really takes care of our needs. We have never had an issue not resolved quickly, or had to wait on hold, or even had any real issues other than minor ones. It is a great relationship that few other applications can match."

A *Thanks so much for your kind words. We try to respond to all our customers' needs quickly and professionally. We know that sometimes people have to wait on hold or leave a message for support, and that not all issues are minor (although we wish they were!) but we will always try to do our best so that our clients can have the best possible experience using BSD's products.*

BSD SpecLink+

Q Where can I find Draft Copy and Master Draft, which used to be selections on the Print screen?

A The Print screen now has a pull-down list that gives you five options: Document, Draft Copy, Master Text Copy, Requirements, and Table of Contents. Document is the default choice and comprises the actual edited specification document. Draft Copy prints all the master text and all user-added text, regardless of what has been selected. Master Text Copy prints all master text (but no user-added text), regardless of what has been selected (this used to be called Master Draft). Requirements are reports listing sections in which selected provisions are specified. The Table of Contents lists all sections in the project.

Q We have been running SpecLink here for a couple of years.

Everything ran great until we upgraded our Norton Anti-virus to Corporate Edition 7.01. Now it takes several minutes to start the software on our Windows95 machines (Windows 2000 still runs great). I know that Symantec had a patch for this in a previous version. Do you know if there is a remedy?

A We do not know of a remedy from Symantec at this time. A workaround would be to go into the Norton Anti-virus and exclude the SpecLink folder from the scan list. This has worked satisfactorily for several customers. We will alert our users on our website if we discover a patch.

Q What do the different file extensions mean?

A The SAV files are created as a backup each time you update a project to a new master. This file is created before the update is started in the remote chance that something happens to your project during the update process. Other file extensions are: SLP which is the project file for the 16-bit SpecLink, SPP which is the 32-bit project file, the LOG file which lists all the updates to your project from the master, and the LDB file which is used by the software for multi-user locking purposes only.

Q Can I create a Division 17 to add some specialty sections?

A Yes, the Tree menu contains a command for Folders, which opens to display a submenu of folder options. You can insert a folder anywhere in the tree, insert a child folder beneath an existing folder, rename a folder you have added, or delete a folder you have added. [You can even create a Division 17 folder!](#)

BSD SpecLink

Q I would like to change the font in just one part of my footer, but I can only select the whole thing.

A In the old SpecLink, you can only change the font on the whole footer (or header). When you switch over to the new SpecLink+ you will be

able to change the font, highlight, bold, or italicize any word or portion of the footer.

! **Note:** If you are planning to update your Novell software to Client version 3.21, you should be aware that this will cause an error in SpecLink. The error message is "Waiting for another user to complete an operation... requires single user access." The message displays even when there is not another person working in the software. Novell has fixed the problem and provided an update available on their website.

Q We are using SpecLink on several machines in the office, and it looks fine on all but one. On this one machine, the bottom edit panel looks like gobbledy-gook until it gets saved.

A Most likely the problem is the printer driver on this machine. The software uses the printer driver for display even if you do not plan to print from this machine. Install a printer and select it as the default and your display problems should go away.

! **Note on Contributor Rewards:** Any subscriber firm may offer sections they have created for consideration as new sections. If we accept a subscriber's contribution and add it to the database, the subscriber will receive a full 3-month extension on their subscription. All topics not currently included in the database are candidates. We also consider how likely it is that other users will benefit from the added sections.

CostLink/CM

Q There is a \$9 difference between what I see on screen and what is printed in my report. The total estimate is \$3 million so this is a minuscule difference, but why is it there at all?

A On screen, the totals for each folder level are displayed as rounded numbers, even though the real numbers are still being stored and added together to get the sum for the

See Q&A, page 7

About Your SpecLink Update

NEW SECTIONS IN SPRING 2001:

- 08585 - SECURITY AND DETENTION WINDOWS: Windows and glazing tested for forced entry and ballistics resistance.
- 03932 - ADHESIVE ANCHORS: U.S. Anchor Corp; Ultrabond epoxy adhesive for rebars and threaded rods.
- 07462 - HARDBOARD SIDING: Louisiana-Pacific; panel and lap siding, simulated shakes, soffits, trim, and fascia.
- 13705 - SECURITY MANAGEMENT SYSTEM: Johnson Controls; Cardkey P2000 system for medium to large facilities.

STATISTICS:

Total Number of Sections: 733
1 new generic section, 3 new proprietary sections.
431 generic sections (278 updated (64 %))
302 proprietary (66 updated (22%))
114,520 paragraphs
164,072 links
1,928 referenced documents, from 166 standards organizations
- 604 documents verified as unchanged
- 159 documents revised by their authors and updated
- 35 obsolete documents removed

873 manufacturers referenced in 2022 locations in 302 generic sections
Additional 89 manufacturers in proprietary sections
Web addresses included for 722 manufacturers, up from 366 last quarter

NOTES ABOUT EXISTING SECTIONS:

13121 has been added to the Small Project Catalog.
13851FPS has been renumbered to 13852FPS — the old section will not update, nor translate.

NOTES ABOUT UPDATED AND NEW DOCUMENTS:

ASCE 7 - Minimum Design Loads for Buildings and Other Structures: The new edition is officially the 1998 edition, even though it was not published until 2000. New material and changes include an expanded wind loads section; new requirements for flood and ice loads; and improved and updated requirements for snow and earthquake loads. New seismic maps and procedures are based on the research done by the National Seismic Hazard Mapping Project. ASCE 7-98 is referenced in the ICC International Building Code. A CD-ROM containing seismic design parameters is packaged with the ICC Building Code.

SSPC-Paint 15-2000 - Steel Joist Shop Primer: Used on open web joists and cold formed steel framing; one coat holding primer intended to provide temporary protection during deliver, storage on site, and erection; for normally dry environments only. The revised standard specifies the primer by physical and performance characteristics only, without any composition or formulation limitations. Formerly, Paint 15 Type was specified as a red-oxide primer. Does not

specify VOC limits. NOTE: Volume 2 of the Steel Structures Painting Manual is now virtually obsolete due to the revision of many of the paint and preparation standards that were part of that hardbound book.

ANSI Standard for Tile Installation: The ANSI A108 and A118 series standards have been updated. Notable changes that affect the specs include:

- The terms “Commercial Portland Cement Grout” and “Dry-Set Grout” have been replaced by “Standard Cement Grout” which, although distinct from “Polymer Modified Cement Grout”, may contain additives. No job-mixed cement-sand grout meets these specifications. “Latex-Portland Cement Grout” is now called “Polymer Modified Cement Grout.”
- Conductive mortar setting has been deleted. Silicone rubber grout has been deleted.
- New material and installation method for tile over exterior glue plywood.
- New material spec and installation method for load-bearing bonded waterproof membrane under tile.

TCA Handbook: The 2001 edition includes some new installation methods for wood floors, exterior floors.

Concrete Masonry Units: ASTM C 90 no longer includes an option for moisture-controlled units (Type I), primarily because although they can be manufactured they cost a lot more and must be delivered in moisture-resistant wrapping to preserve the as-manufactured condition. If moisture-controlled units are required, verify availability, cost, and requirements for delivery, storage, and handling with manufacturer, and add those requirements to the specification.

Aviation Obstruction Lighting and Marking: Detailed guidelines for lights on tall buildings and other structures and painting of tall structures such as tower and stacks are contained in FAA Advisory Circular 70/7460-1K (2000), which can be found at <http://www.faa.gov/ats/ata/ai>. Design of heliport lighting can be found in FAAAC 150/5390-2A (1994), which can be found at <http://www.faa.gov/arp/arphome.htm> “Advisory Circulars”.

Precast Concrete: PCI has reissued its standard for quality control of structural precast concrete. PCI MNL-116 - Manual for Quality Control for Plants and Production of Structural Precast Concrete Products; 1999, Fourth Edition has been totally reorganized and updated since the 1985 publication of the third edition.

PCI has also created a totally new standard covering fabrication and erection tolerances. PCI MNL-135 - Tolerance Manual for Precast and Prestressed Concrete Construction; 2000, includes tolerances for both structural and architectural precast concrete. To some degree, the new standard overlaps requirements for fabrication tolerances included in PCI MNL-116 and PCI MNL-117, but it also includes new standards for erection tolerances that have never been included in the other standards.

continued next page

Federal Specs: Federal and military specifications (FS and MIL) continue to be withdrawn at a fairly constant rate. For many, the agency having jurisdiction has identified alternative standards that the government will use. For others, no replacement is identified and presumably not necessary. The best (and perhaps the only) way to find out about the status of a federal or military spec or standard is to use the DOD's website called Assist-Online at <http://www.dodssp.daps.mil>. You have to sign up for a user name and password, but access is free and when the standard is available in PDF format you can download it for free. The site also offers a free update notification service by subject category.

Insulating Glass Manufacturers Alliance: IGMA was formed on October 2, 2000 from the merger of the Insulating Glass Manufacturers Association of Canada (IGMAC) and the Sealed Insulated Glass Manufacturers Association (SIGMA).

**ORGANIZATIONS WHOSE DOCUMENTS WERE
VERIFIED LAST QUARTER:**

AA The Aluminum Association, Inc.
AABC Associated Air Balance Council
AAMA American Architectural Manufacturers Association
AASHTO American Association of State Highway and Transportation Officials
ABMA American Bearing Manufacturers Association, Inc.
ACI American Concrete Institute International
AFPA American Forest and Paper Association
AHA American Hardboard Association
AI The Asphalt Institute
AISC American Institute of Steel Construction, Inc.
AISI American Iron and Steel Institute
AITC American Institute of Timber Construction
AMCA Air Movement and Control Association International, Inc.
ANSI American National Standards Institute
APA APA - The Engineered Wood Association
API American Petroleum Institute
ARI Air-Conditioning and Refrigeration Institute
ASHRAE American Society of Heating, Refrigerating and Air-Conditioning Engineers, Inc.
ASME The American Society of Mechanical Engineers
ASSE American Society of Sanitary Engineering
ASTM American Society for Testing and Materials
AWI Architectural Woodwork Institute
AWPA American Wood-Preservers' Association
AWS American Welding Society
AWWA American Water Works Association
BHMA Builders Hardware Manufacturers Association
CDA Copper Development Association, Inc.
CGA Compressed Gas Association
CISCA Ceilings & Interior Systems Construction Asso.
CISPI Cast Iron Soil Pipe Institute
COE Corps of Engineers
CRA California Redwood Association
CRI Carpet and Rug Institute
CRSI Concrete Reinforcing Steel Institute
CTol Cooling Technology Institute

DASMA Door & Access Systems Manufacturers' Asso., Int'l
DHI Door and Hardware Institute
EJMA Expansion Joint Manufacturers Association
FAA Federal Aviation Administration
FS Federal Specifications and Standards
GA Gypsum Association
GANA Glass Association of North America
HI The Hydronics Institute
HPVA Hardwood Plywood & Veneer Association
ICC International Code Council, Inc.
IEEE Institute of Electrical and Electronic Engineers
IESNA Illuminating Engineering Society of North America
IGMA Insulating Glass Manufacturers Alliance
ILI Indiana Limestone Institute of America, Inc.
KCMA Kitchen Cabinet Manufacturers Association
MBMA Metal Building Manufacturers Association
MIL Military Standards and Specifications
MSS Manufacturers Standardization Society of the Valve and Fittings Industry, Inc.
NAAMM The National Association of Architectural Metal Manufacturers
NACE NACE International
NBGQA National Building Granite Quarries Association, Inc.
NCRP National Council on Radiation Protection and Measurements
NEBB National Environmental Balancing Bureau
NECA National Electrical Contractors Association
NEMA National Electrical Manufacturers Association
NETA InterNational Electrical Testing Association
NHLA National Hardwood Lumber Association
NILECJ National Institute of Law Enforcement and Criminal Justice
NIST National Institute of Standards and Technology (Department of Commerce)
NLA National Lime Association
NOFMA National Oak Flooring Manufacturers Association
NRCA National Roofing Contractors Association
NSF NSF International
PCA Portland Cement Association
PCI Precast/Prestressed Concrete Institute
PDI Plumbing and Drainage Institute
PTI Post-Tensioning Institute
SDKI Steel Deck Institute
SJI Steel Joist Institute
SMA Screen Manufacturers Association
SMACNA Sheet Metal and Air Conditioning Contractors' National Association
SPIB Southern Pine Inspection Bureau, Inc.
SPRI Single Ply Roofing Institute
SSPC Society for Protective Coatings
STI Steel Tank Institute
TCA Tile Council of America, Inc.
TIA Telecommunications Industry Association
UL Stds Underwriters Laboratories Inc.
WCLB West Coast Lumber Inspection Bureau
WDMA Window and Door Manufacturers Association
WWPA Western Wood Products Association

next level. In the reports, the rounded numbers are actually added together creating a slight rounding difference which will always be quite small.

Q I am trying to search for “wiring” tasks in Division 16. I clicked on the first folder in Division 16 and selected “Down” as my search direction, but it keeps finding tasks in Division 2 instead.

A In order to search the tasks in Division 16, you should click on the first task in that Division (instead of clicking on a folder as you were doing).

Q I am changing the labor rates in the resource view of my estimate, and it is going very slowly.

A The first thing to check is if you have Auto-recalc turned on. If so, then that should be turned off to prevent the estimate from completely recalculating a new grand total, including adjustments and markups, each time a change is made. Another trick to speed up the process is to create a new Labor Library and edit the labor rates there, then reprice the estimate to the new rates in this library.

Q What is the difference between the Project Title and the Report Title?

A The Project Description is entered on the General tab of the Project Summary Info screen along with an optional project number and the names of the Architect, Engineer, and Estimator. This information prints on the estimate Title Page and the Project Title also prints at the top of each page of your report.

The Report Title is entered on the Reports Setup screen and is an optional space for naming your report to distinguish it from other reports of the same project. For instance, you may print a report when the project design is only 65% complete, and want to note that on your printout. When you print the final report at 100% complete, you would change the Report Title to reflect this.

An Interview With...

Paul LeMenager of PPL

PPL Corporation, formerly known as Pennsylvania Power and Light, has been using BSD SpecLink for the last 4 years. Paul LeMenager is responsible for product implementation, working with 5 other users in the office.

LeMenager says that it took them only about a week to learn the software and that they created an office master by renaming one of the model projects and

tailoring it for their project types. He worked with BSD’s technical support department to learn the best way to import some

customized text from Microsoft Word. LeMenager says he likes the interlocking references and linking in the software, which really save them time when developing a specification.

One of their most successful projects is the Susquehanna Energy Information Center in Berwick, Pa. This center provides an educational experience and is fun for all ages. Through its interactive displays, visitors can learn about nuclear power and the operation of a nuclear plant. For more information you can visit their website at pplweb.com.



Laura Fortin of Uplands Construction

Laura Fortin of Uplands Construction Group LLC in Westerly, Rhode Island is practically a brand new BSD CostLink/CM user and she already finds that she is saving time while developing her cost estimates. Not only that, they have already presented an estimate to an owner, and they loved being able to present a summary view for the owner and more detailed, landscape reports for themselves.

Once they got up and running on CM, they quickly started developing their own templates and

databases. They have also purchased the R.S. Means commercial cost data. Ms. Fortin is new to R.S. Means and has been very happy with the data and using it within CM. Uplands purchased CM under BSD’s new Lease-Purchase agreement. The Lease-Purchase includes the software, Means data, and Extended Support Plan (ESP) in an affordable package.

Ms. Fortin says “[CM] is very user-friendly. Once you get the hang of it, it’s easy. [I] can now turn out an estimate in a few days.”



Prices Have Gone Up Slightly

Sign up for training before March 31st and pay the old training rates of \$395 for BSD SpecLink+ and \$1095 for BSD CostLink/CM.



You can now look for BSD class schedules on our internet site. Just go to www.bsdssoftlink.com and go to the training page. You will find schedules, maps, hotel information, and information about Atlanta.

2001 Training Schedule

BSD SpecLink+
1-1/2 day \$495

March 5 - 6
April 9 - 10
May 7 - 8
June 4 - 5
July 9 - 10
August 6 - 7
September 10 - 11
October 8 - 9
November 12 - 13
December 10 - 11

- *Class attendees earn 12 AIA Learning Unit Hours, all of which qualify for HSW hours.*

BSD CostLink/CM (M32)
3-1/2 days \$1295

March 13 - 16
April 24 - 27
May 22 - 25
June 12 - 15
July 17 - 20
August 21 - 24
September 18 - 21
October 16 - 19
November 6 - 9
December 4 - 7

- *Government Contractors earn Mcaces Certification.*
- *May qualify for Continuing Professional Competency credits.*

Early Bird Training Special

Sign up for an Atlanta class more than 60 days in advance, and receive a **10% discount** on your enrollment fee.



Building Systems Design, Inc.
1175 Peachtree Street, Suite 1900
Atlanta, GA 30361

BULK RATE
U.S. POSTAGE PAID
PERMIT 6613
ATLANTA, GA