



## New Features In SpecLink and PerSpective

The Fall release of the BSD SoftLink Suite includes a number of significant enhancements to the BSD SpecLink® and PerSpective® software. It also includes extensive additions and updates of the data in both products (See *About Your SpecLink/PerSpective Update* in this issue).

Users who operate SpecLink on a network will see significant improvements in speed for many operations, due to a new, more efficient data format. Network installations will run even faster if installed locally on each workstation, leaving the access key on the network server. In addition, further changes have been made in the database structure that pave the way for more dramatic speed increases later in the year, when a completely rewritten link engine will be released.

Other changes with immediate impact include improved exporting capabilities. Files exported to RTF now include true margins, making further editing in word processing much simpler. Editing the Table of Contents to add sections created by consultants, for instance, can now be accomplished easily. Another related development is the fact that exporting to RTF populates page counts in the TOC report. This means you can generate an up-to-date TOC with all section page counts in a single operation by exporting the project to RTF. If the RTF files themselves are not needed, they can be easily deleted from a temporary directory.



The tree display in both products has been changed to include the last time each document was edited. The date and time now appear in parentheses after the section/chapter number, title, and catalog notice. Formatting of headers and footers also has been enhanced. Font sizes available now range from 6 pt. upward and include 7, 9, and 11. The text in the header/footer format boxes can also be manipulated more easily, with up to six lines available. The END OF SECTION notice for SpecLink and the END OF CHAPTER notice for PerSpective have been changed so they never appear as the only paragraph on the last page of a section/chapter. If the notice would be on the first line of the last page, it is now “squeezed” onto the last line of the previous page. Otherwise, the last paragraph is moved to the last page, ahead of the notice.

## New in CostLink/CM

### FASTER, STILL GROWING

Like other BSD applications, CM now ships and supports an optimized database format that improves performance, particularly when opening databases over a network. An Optimize Database command is provided on the File Menu for converting existing projects and databases. This feature also paves the way for more integrated, cross-application linking functionality in future releases.

And using a Referenced database is now a faster way to build a project. You now have the option to copy the referenced cost items into your project all at once, making the drag-drop process a simpler, faster way to estimate.

See the ReadMe file on the CD for more details on both of these new features. You'll also want to read the article on page 2 describing BSD's new alliance designed to provide CM users more comprehensive digitized takeoff functionality.

### Table of Contents

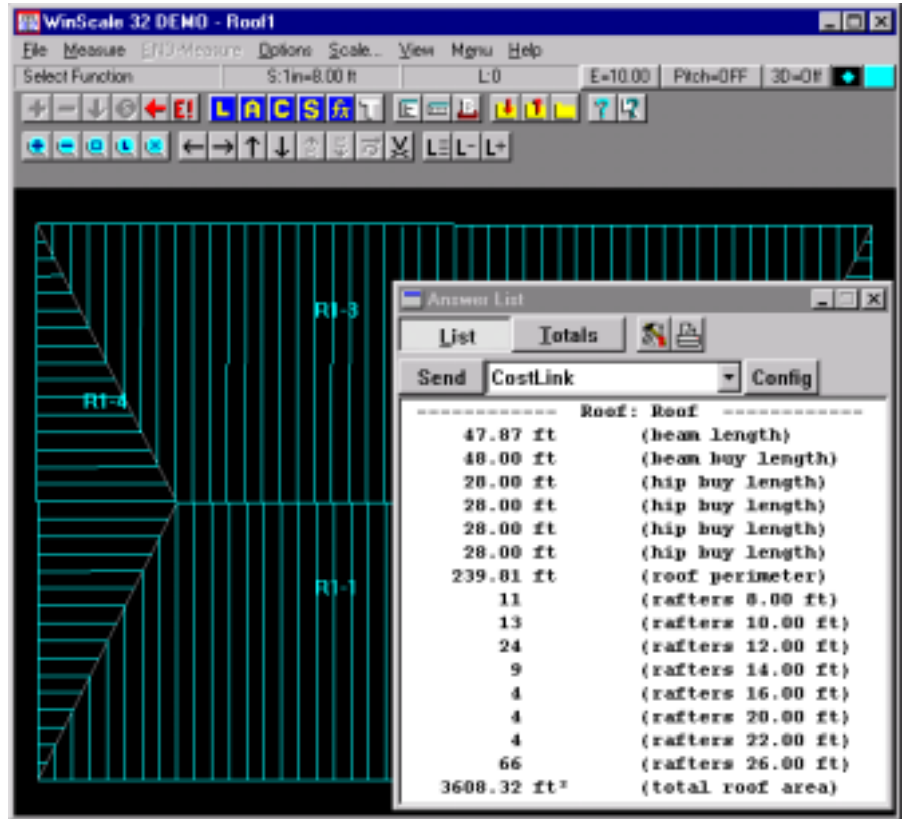
<b>New Features .....</b>	<b>pg. 1</b>
<b>New in CostLink/CM .....</b>	<b>pg. 1</b>
<b>Roctek .....</b>	<b>pg. 2</b>
<b>Q&amp;A .....</b>	<b>pg. 3</b>
<b>SpecLink/PerSpective</b>	
<b>Update .....</b>	<b>pg. 4</b>
<b>Dianne Butler .....</b>	<b>pg. 6</b>
<b>Interview .....</b>	<b>pg. 7</b>
<b>2001 Training Schedule ..</b>	<b>pg. 8</b>

## Digitizer Software Now Available From BSD

BSD is pleased to announce that we are now a dealer for the Roctek series of digitizer software products. Rock Technologies Corporation was incorporated in July, 1985 to address software computer applications for the general construction and heavy construction industries and today is the construction software industry's leader in graphical digitized takeoff software.

Roctek's graphical takeoff software provides detailed quantity survey information, saves graphical records, and easily ties these quantities into BSD CostLink/CM. Roctek has shipped well over 5,000 end products to its customers. These customers range in size from "mom & pop" businesses doing takeoff on the kitchen table, to multi-billion dollar international conglomerates. Roctek takeoff software is designed for general contractors, concrete, roofing, interior, tiling, landscaping, paving, excavating & grading, heavy, utility and road building contractors. Roctek customers typically learn the intuitive software very quickly and perform takeoff estimating at least twice as fast as they previously did.

Using Roctek's unique ability to directly tie



Roctek Software

quantities into BSD CostLink/CM, our customers can reap the benefit of digitized takeoff without changing anything about their method of estimating. For additional information and pricing on Roctek software, contact [sales@bsdsoftlink.com](mailto:sales@bsdsoftlink.com) or call BSD at 888-BSD-SOFT.

### BSD SpecLink to Continue

The original 16-bit product is still in use by many offices, so it will continue to be available on the SoftLink CD-ROM for at least the next two quarters. In the meantime, the 32-bit SpecLink+ product continues to improve, so we urge those subscribers who haven't yet made the switch to check it out!



## "Exclusive offerings of CSI-DBIA and BSD."

BSD and CSI-DBIA have formed a strategic alliance dedicated to development of innovative software products for the construction industry.

*According to CSI's Executive Director, Gregory Balestrero, "each organization will bring to this new relationship a set of capabilities and strengths that will inevitably result in better and more powerful tools for the construction industry." DBIA's President and CEO, Jeffrey L. Beard, added that "working together, we can achieve a result for our members that would not be possible for any one organization."*

CSI (The Construction Specifications Institute) is a national professional association of more than 18,000 members that provides technical information and products, continuing education and professional conferences for the construction industry. CSI's policy of industry-wide membership has resulted in improved communication and unprecedented teamwork to develop innovative products and services benefiting all involved in nonresidential construction.

DBIA (the Design-Build Institute of America) was founded in 1993 to promote the widespread and successful utilization

of the design-build project delivery method throughout industry and government. Its membership comprises firms and individuals engaged in the delivery of all types of building projects via the design-build process and dedicated to improving the professional standards of the industry.



Advancement  
of Construction  
Technology

DBIA



DESIGN-BUILD  
INSTITUTE OF AMERICA

# Q & A

## All BSD Products

**Q** I'm trying to open a file that is shared in my office and I keep getting errors, but everyone else can open it fine. My computer crashed while I had it open last time.

**A** In Windows Explorer, navigate to where your BSD software is installed on your local computer. Depending on which software you have installed, inside the SpecLink+, CostLink CM, or PerSpective directory, there is a folder called User, and inside that is a folder called Temp. In order for you to share files across the network, the software keeps a proxy database for the projects you have edited in this folder. If you crash while you have a project open, this database could prevent you from opening the project. Delete the contents of the temp folder and you should be able to open the project again. Note: The first time you run a new version of the software, it will take a few minutes to start because it is deleting the files in the \User\Temp folder.

**Q** If I get an error, do I have to write the whole thing down before I contact support?

**A** No. BSD products create a log of most error messages as you receive them. It helps Support troubleshoot your problem better if you remember exactly what you were doing and what steps you were using when the error occurred, but if you don't have the exact text of the error you can always email us your error log. The log is called BSDERROR.LOG, and is located inside the User folder inside the directory where your BSD software is installed - SpecLink+, CostLink CM, or PerSpective.

## BSD CostLink/CM

**Q** I'm trying to open my assemblies database and I get Error 3045: Could not use [filepath] Assemblies.MAS.

**A** If you have Access 2000 installed, your computer recognizes the

Assemblies database extension (\*.MAS) as an Access file. To fix this, open Windows Explorer and either go to the View menu and choose Folder Options, or if you are using Windows 2000, from the Tools menu choose Folder Options. Click the File Types tab and locate the .MAS extension. Change the association for it to CostLink/CM.

You also need to edit your computer's registry. You may want to ask your system administrator to do this part. Click the Start button and choose Run. Type regedit and click OK. Expand the folder HKEY\_CLASSES\_ROOT and locate the .mas folder. Delete the .mas folder. Close the registry editor. You should now be able to open your assemblies databases in CostLink/CM.

**Q** If I do a detail report in portrait, my markups are broken out in a tail at the end so the final number is my estimate total. I prefer landscape reports, though.

**A** There is a new landscape report that includes the markups tail at the end. Select Landscape 1 in the Reports setup dialog to view this. Landscape 2 is the old landscape report.

**Q** I would like to include my client's logo on the report.

**A** This capability is new in this version of CostLink/CM. To insert a logo into the standard reports, rename the logo to logo.bmp, logo.jpg, or logo.gif, and place that file into your CostLink CM\System\Reports folder. The logo will automatically print in the top right corner of your reports.

## BSD SpecLink+/BSD PerSpective

**Q** I have several user-added paragraphs that I would like to move to another section or chapter in the same project. How do I move them?

**A** The best way to move several paragraphs of text at a time is to drag across the text of the paragraphs with your mouse so they appear in reverse video, and then click on the Cut button. (If they are master paragraphs, and not user-added, you can choose Copy instead.) Then, in the section or chapter you would like to move the paragraphs to, click to place your cursor in the paragraph below where you want the copied paragraphs, and then click on the Paste button. All the text is moved above the paragraph where

you had your cursor.

**Q** I would like to be able to save a particular paragraph format that a client likes.

**A** From the Tools menu choose Customize Styles. On the Styles tab of the Modify Paragraph Format box you can select one of four pre-defined options from the Style Set pulldown: CSI Style, Military Style, Block Style, Sequential Numbering Style. Choose the option that most closely matches the format that your client likes, and then make any necessary modifications. (For more directions on how to make modifications, see Chapter 9: Printing in the updated User Manual on the CD.) When you modify the style it will be saved as the User-defined Style. You can have one user-defined style per project.

If you have several clients that each want a different style, create empty projects (no sections selected) and set the style that each client desires in each project. Then, each time you start a new project, use Copy Project to copy the project for that client. If you use an office master, import the sections you need using Tools... Import From Project.

**Q** How can I globally change a font?

**A** Go to the Tools menu and select Customize Styles. Click on the Fonts tab and then click on the Fonts button to the right of each level. You can change the

*See Q & A, page 4*

## LinkLine

A BSD SoftLink® Publication  
Editor: Marisa Witherspoon  
The LinkLine is published by Building Systems Design, Inc., 1175 Peachtree Street, Suite 1900, Atlanta, GA 30361.

Permission to use excerpts in other publications is granted provided the publisher is notified in advance at (404) 876-4700.

BSD SpecLink, BSD CostLink, and BSD SoftLink are registered trademarks, and BSD CadLink and BSD LinkMan are all trademarks of Building Systems Design, Inc.

Get the latest on BSD by visiting our Web Page at [www.bsdssoftlink.com](http://www.bsdssoftlink.com).

Font, Style, and Size in this box.

**Q** I am editing a paragraph with a blue choice and I do not want any of the options that are in the choice. How can I edit the blue choice text?

**A** You cannot edit blue choice text in a master paragraph. In order to get the text you want, you will have to copy the master paragraph. There are two ways to do this.

**Option One:** If you want to keep the blue choice and just add more choices or edit existing choices, copy the whole paragraph by placing your cursor in the paragraph so that it is blinking and click the Copy button. Then Paste it above or below the master paragraph. You will be able to click in the blue choice field in your new paragraph and choose from the Document menu, Choices, Edit Choice.

**Option Two:** If you do not want to keep and edit the blue choice field, then copy only the text of the master paragraph to a new paragraph. First create a new paragraph by clicking at the beginning or end of a paragraph and pressing Enter. Then drag across the text of the master

paragraph and click the Copy button. Click in the new paragraph you created and click the Paste button. All the text can now be edited.

Be sure to select your paragraph and deselect or exclude the master paragraph. You may also want to insert a Project Note to let subsequent users know which paragraphs they are supposed to use.

**Q** I want to be able to tell what has changed in a spec between when it was issued for pricing and when it was issued for construction.

**A** The Compare Projects feature was created for this purpose, and also for tracking changes in addenda. To use Compare, be sure to keep a separate copy of your project each time it is issued. For example, when issued for pricing, keep a copy of the file called [projectname]pricing issue, and later for construction keep a separate copy called [projectname] construction issue. Also keep a copy for each issuance of addenda.

When you are ready to see what is different between two files, open the more recent project file, and from the Tools menu choose Compare. Select the older version of the project file, and then select whether you would like to generate a

comparison of the whole project, a branch, or a single section or chapter. Then you will be able to print, preview, or export a comparison to word processing format.

In the comparison file, text that was added to the more recent project will be underlined, and text that was deleted will be struck out. There will also be a vertical line to the right of paragraphs that have changes to help you and the reader more easily locate changes.

**Q** I would like to apply a format to one entire section or chapter, but not save a user-defined style.

**A** If you would like to change the font, or turn off AutoNumber for an entire section or chapter, first select the text of all the paragraphs. To do that, click to place your cursor to the left of the first letter in the first paragraph (the title paragraph) in the chapter or section. Then hold down the Ctrl and Shift keys on your keyboard while you press the End key. The background of all the paragraphs should turn black. Apply the desired format using the toolbar above the Document panel; or to turn off the numbering, from the Document menu choose No AutoNumber.

## About Your SpecLink/PerSpective Update

### SpecLink+ Statistics:

781 sections total, 471 updated (60%)  
437 non-proprietary sections, 269 updated (62%)  
344 proprietary sections, 202 updated (59%)  
6 new templates in "Division" 0  
71 new proprietary sections, including 5 replacements  
118,391 paragraphs  
123,604 links  
1,978 external documents referenced, from 167 standards developing organizations  
886 manufacturers listed in 305 non-proprietary sections  
203 manufacturers sponsoring proprietary sections, of which 115 are not listed in non-proprietary sections

### PerSpective Statistics:

179 chapters, 27 updated (15%)  
25,937 paragraphs

28,379 links

616 external documents referenced, from 76 standards developing organizations

### ASTM Statistics:

908 ASTMs verified and evaluated  
899 ASTMs referenced (includes 189 listed in Section 01425 for information)  
6 completely new standards added  
319 revised standards (35%)  
61 reapproved standards  
9 withdrawn standards  
532 standards verified as unchanged  
398 SpecLink+ sections affected by ASTM changes (50%)  
710 ASTMs referenced in SpecLink+, 315 updated (44%)  
27 PerSpective chapters affected by ASTM changes (15%)  
283 ASTMs referenced in PerSpective, 133 updated (47%)

**ASTM Standards:** Standards published by the American Society for Testing and Materials (ASTM) make up 45% of the 1,978 documents referenced in SpecLink and PerSpective — the largest number published by a single organization. All of the ASTMs referenced in SpecLink and PerSpective were verified in the last quarter. Each standard revised was compared to the previous edition and evaluated for their potential effect on specifications, before updating the sections.

volume compendium of the standards referenced in the model building codes, SpecLink and PerSpective, and other guide specifications — "ASTM Standards in Building Codes". ASTM uses BSD's lists of standards referenced to make the 4 volumes complete but not unnecessarily large. Only 30 ASTMs referenced in SpecLink are not included, and they are referenced only in proprietary sections; all of the ASTMs referenced in PerSpective are included.

Monitoring the continual, irregularly timed changes to ASTMs might be an almost impossible project, except that ASTM publishes an annual 4-

We use ASTMs in Building Codes as the "current" edition for purposes of referencing edition dates for one reason: It's simple. We know that most

design professionals don't have copies of many, if not most, of the ASTMs referenced, so we've chosen as our definitive edition the simplest (as well as most economical) way to purchase them. For \$795, you get over 1,500 ASTMs related to construction, including the ASTMs actually referenced in SpecLink and PerSpective. There are only two other ways to get ASTMs: Individually at an average of \$20 per standard, and individual volumes of the complete 75-volume set of all ASTMs, at an average of \$150 each (after you figure out which volumes you need). Neither of these other two options is very simple, time-wise either — the individual standards are published at variable times throughout the year and the 75 volumes are published at monthly intervals.

So, if you decide to add ASTMs to your reference library, we recommend *ASTM Standards in Building Codes*, published annually in early July, for \$795. The CD-ROM version costs \$1,195. If you are not an ASTM member, you can get the 10 percent member discount if you place your order with Margie Lawlor at (610) 832-9616; tell her you are a BSD SpecLink/PerSpective subscriber. For more information, go to [www.astm.org](http://www.astm.org).

### Notable Changes to Referenced ASTM Standards:

**Steel Sheet:** Cold- and hot-rolled steel sheet are commonly referenced in specifications — in SpecLink, cold-rolled steel sheet is specified by reference to ASTM standards in 25 different sections; hot-rolled in 15 sections. 12 cold- and hot-rolled steel sheet standards have been replaced with 2 completely new standards. The new standards are appropriate for metal deck, metal pan stairs, light gauge metal framing, doors and frames, breechings and chimneys, air ducts, and other sheet metal fabrications. Both new standards cover uncoated steel sheet up to 0.23 inch (6 mm) thick. Hot-rolled sheet is generally not available in thicknesses less than 18 gage (1.2 mm). Cold-rolled sheet has somewhat tighter thickness and flatness tolerances and some restrictions on imperfections. If appearance is not a factor, hot-rolled and cold-rolled may be interchangeable. The new standards are:

**ASTM A 1008 - Standard Specification for Steel, Sheet, Cold-Rolled, Carbon, Structural, High-Strength Low-Alloy and High-Strength Low-Alloy with Improved Formability; 2001.**

Use ASTM A 1008 for steel sheet except hot-rolled (ASTM A 1011), galvanized (ASTM A 653/653M), sheet over 0.23 inch (6 mm) thick, and sheet requiring special chemical composition. The standards it replaces are:

Former...A 1008	Designation
A 366/A 366M.....	CS, Commercial Steel
A 607.....	HSLAS, high strength low alloy
A 611.....	SS, structural steel with 5 grades
A 620/A 620M.....	DS, drawing steel
A 715.....	HSLAS-F, improved formability
A 963/A 963M.....	DDS, deep drawing steel
A 969/A 969M.....	EDDS, extra deep drawing steel

Only A 366/A 366M and A 611 have ever been commonly referenced in specs. When referencing A 1008, it is necessary to specify the type: Commercial Steel (Designation CS) and Structural Steel (Designation SS) will be the most common. For structural, a Grade must also be specified. The SS Grade designations have changed from letters A through E, to numbers that designate the minimum strength: Grades 25 [170], 30 [205], 33 [230], 40 [275], and 89 [550], respectively. Other than this change, the new standard specifies each type of sheet in the same manner as in the former standards.

**ASTM A 1011 - Standard Specification for Steel, Sheet and Strip, Hot-Rolled, Carbon, Structural, High-Strength Low-Alloy and High-Strength Low-Alloy with Improved Formability; 2001.**

Use ASTM A 1011 for steel sheet except cold-rolled (A 1008), galvanized (ASTM A 653/653M), sheet over 0.23 inch (6 mm) thick, and sheet requiring special chemical composition. The standards it replaces are:

Former...A 1011	Designation
A569/A569M.....	CS, commercial steel
A570/A570M.....	SS, structural steel with 5 grades
A607.....	HSLAS, high-strength low-alloy
A622/A622M.....	DS, drawing steel
A715.....	HSLAS-F, high-strength low-alloy with improved formability

Only A 569/A 569M and A 570/A 570M have ever been commonly referenced in specs. When referencing A 1011, it is necessary to specify the type: Commercial Steel (Designation CS) and Structural Steel (Designation SS) will be the most common. For structural, a Grade must also be specified — the grade designations have not changed. The new standard specifies each type of sheet in the same manner as in the former standards.

**Structural Steel:** A standard new to SpecLink has been added to Section 05120 - Structural Steel: **ASTM A 992/A 992M - Standard for Steel for Structural Shapes For Use in Building Framing (2000).** This standard covers rolled wide flange ("W") shapes only and requires minimum tensile strength of 65 ksi (450 MPa) and minimum yield point of 50-65 ksi (345-450 MPa). This standard references ASTM A 6/A 6M for general requirements, including dimensions for standard shapes, as does ASTM A 36/A 36M which is still in effect. A 36/A 36M covers shapes, plates, and bars for structural purposes, with tensile strength of 58-80 ksi (400-550 MPa) and minimum yield point of 36 ksi (250 MPa).

**Concrete Masonry:** The option for moisture-controlled units has been removed from all ASTMs for concrete masonry units: **ASTM C 55 - Standard Specification for Concrete Brick (2001)**, **ASTM C 90 - Standard Specification for Loadbearing Concrete Masonry Units (2001)**, and **ASTM C 129 - Standard Specification for Nonloadbearing Concrete Masonry Units (2000a)**. Basically, moisture-controlled units were very difficult to deliver — in order to maintain the moisture level, the units had to be wrapped with plastic immediately after production and delivered that way.

**Mortar:** **ASTM C 387 - Standard Specification for Packaged, Dry, Combined Materials for Mortar and Concrete (2000)** now allows many new additives, including chemical and air-entraining admixtures, slag, latex and powder polymer additives, and silica fume.

**Insulation:** **ASTM C 552 - Standard Specification for Cellular Glass Thermal Insulation (2000)** now includes Grades 1 and 2 for the existing Types I-IV. Grade 2 has slightly lower insulating values. **ASTM C 553 - Standard Specification for Mineral Fiber Blanket Thermal Insulation for Commercial and Industrial Applications (2000)** has been extensively revised. Density is no longer a specified property.

**Interior Steel Framing:** The maximum stud height tables in **ASTM C 754 - Standard Specification for Installation of Steel Framing Members to Receive Screw-Attached Gypsum Panel Products (2000)** have been extensively revised. This is the standard that specifies maximum spacings and spans for cold-formed steel members for partitions and ceilings. More marking and identification requirements have been added to **ASTM C 645 - Standard Specification for Nonstructural Steel Framing Members (2000)**. Individual members and bundles are required to be marked with minimum steel thickness, minimum yield strength, and weight of protective coating if other than standard, plus color coding based on steel thickness.

**Weathering Tests:** Three commonly referenced standards for tests for fading, colorfastness, crazing and cracking, and other results of outdoor exposure have been replaced by four new standards. The new standards make it much easier to specify weathering tests, by specifying performance rather than apparatus-specific procedures and by including standard exposure cycles (light/dark, wet/dry, etc.). When referencing the new standards, it is necessary to state the exposure cycle (either by reference to one of the standard cycles or by description) and the length of time exposed. The new standards encompass the apparatus and cycles specified in the old standards, but to compare tests made under the old and new standards a detailed description of the exposure conditions is required.

*Continued on page 6*

**New standards**

**Replaces**

<b>ASTM G 152</b> - Standard Practice for Operating Open Flame Carbon Arc Light Apparatus for Exposure of Nonmetallic Materials (2000a)	<b>ASTM G 23</b>
<b>ASTM G 153</b> - Standard Practice for Operating Enclosed Carbon Arc Light Apparatus for Exposure of Nonmetallic Materials (2000a)	<b>ASTM G 23</b>
<b>ASTM G 154</b> - Standard Practice for Operating Fluorescent Light Apparatus for UV Exposure of Nonmetallic Materials (2000a)	<b>ASTM G 53</b>
<b>ASTM G 155</b> - Standard Practice for Operating Xenon Arc Light Apparatus for Exposure of Nonmetallic Materials (2000a)	<b>ASTM G 26</b>

**Other ASTM Standards Withdrawn:**

- ASTM A 502 - Standard Specification for Steel Structural Rivets (no replacement)
- ASTM A 687 - Standard Specification for High-Strength Nonheaded Steel Bolts and Studs (no replacment)
- ASTM E 142 - Standard Method for Controlling Quality of Radiographic Testing (merged into ASTM E 94.)

**SpecLink Sections New This Quarter:**

- 00001 Project Title Page (Blank template)
- 00005 Certifications Page (Blank template)
- 00007 Seals Page (Blank template)
- 00015 List Of Drawings (Blank template)
- 00020 List Of Schedules (Blank template)
- 00600 Bonds And Certificates (Blank template)
- 01725 Moving Loaded Shelving (DuPont Flooring Systems)
- 02795 Porous Pavements (Invisible Structures)
- 02875 Site And Street Shelters (Skylark Shelter Systems)
- 03130 Permanent Forms (R-Control)
- 03305 Integral Waterproofing Of Concrete (Xypex)
- 03395 Curing/Sealing/Hardening Concrete Fl. (Ashford Formula)
- 03400 Precast Concrete (Shockey Precast)
- 03490 Glass Fiber Reinforced Concrete (Stromberg Arch. Prod.)
- 03925 Concrete Resurfacing And Rehabilitation (Mapei)
- 04720 Cast Stone (Stromberg Architectural Products)
- 05425 Pre-Engineered Cold-Formed Steel Trusses (Alpine)
- 05511 Aluminum Ladders (Royalite Manufacturing)
- 05520 Handrails And Railings (American Railing Systems)
- 05522 Tempered Glass Railing Assemblies (Taco Metals)
- 06120 Structural Panels (R-Control Structural Insulated Panels)
- 06400 Architectural Woodwork (Tucker Millworks)
- 06414 Cabinet Hardware (Amerock)
- 06414 Cabinet Hinges And Drawer Runners (Julius Blum)
- 06610 Glass Fiber Reinf. Plastic Fabr. (Stromberg Arch. Prod.)
- 06650 Solid Polymer Fabrications (MPI; DuPont Corian.)
- 07162 Crystalline Waterproofing (Xypex)
- 07180 Traffic Coatings (Carlisle; polyurethane)
- 07261 Sheathing Membrane (Tygar Housewrap.)
- 07320 Roof Tiles (Guiraud Freres clay roof tiles from France.)
- 07321 Concrete Roof Tiles (Westile)
- 07461 Wood Siding (Louisiana-Pacific SmartSystem)
- 07463 Aluminum Soffits And Trim (NAPCO)
- 07463 Aluminum Soffits And Trim (Variform)
- 07464 Vinyl Siding (Louisiana-Pacific)
- 07466 Fiber Cement Siding (CertainTeed)
- 07765 Roof Pavers And Ballast Materials (Westile)
- 07900 Joint Sealers (Sonneborn(R) Building Products)
- 08120 Aluminum Doors And Frames (Cline Aluminum Doors)
- 08295 Fire Door Conversion (Ever Ready Closures; retrofit)
- 08305 Sliding Glass Doors (G-U Hardware)
- 08341 Acoustical Doors And Frames (Security Acoustics)
- 08410 Metal-Framed Storefronts (Arch Aluminum & Glass)
- 08470 Revolving Entrance Doors (C.J. Rush)
- 08714 Door Locks (G-U Hardware)
- 08750 Window Hardware (G-U Hardware)
- 09235 Glass Fiber Reinf. Gypsum Fabr. (Stromberg Arch. Prod.)
- 09275 PVC Cornices (Infinity Cornice & Lighting)
- 09305 Tile Setting Materials And Methods (Laticrete)
- 09545 Specialty Ceilings (Gordon)
- 09930 Stains And Transparent Finishes (Minwax)
- 09962 Floor Coatings (Dur-A-Flex; epoxy and acrylic)
- 10160 Metal Toilet Compartments (Hadrian)
- 10171 Solid Plastic Compartments & Vanity Counters (Comtec)
- 10210 Wall Louvers (New Concept Louvers)
- 10341 Prefabricated Cupolas (New Concept Louvers)

- 10342 Prefabricated Steeple (Munns Manufacturing Inc)
- 10500 Lockers (Comtec; high density polyethylene)
- 10710 Exterior Shutters (Willard Shutter)
- 11011 Building Maintenance Access Equip (Tractel Swingstage)
- 12304 Drawer Slides For Manufactured Casework (Accuride)
- 12498 Solar Control Film (Southwall Technologies; V-Kool film)
- 12504 Drawer Slides & Access. For Office Furniture (Accuride)
- 12565 Library Furniture (Buckstaff)
- 13050 Prefabricated Rooms (Starco)
- 13125 Grandstands And Bleachers (Bleachers International)
- 13706 Security Management System (Johnson Controls P1000)
- 13707 Security Management System (Johnson Controls P900)
- 13708 Video Badging System (Johnson Controls)
- 15908 Thermostats (White-Rodgers)
- 16132 Surface Nonmetallic Raceways (Panduit)
- 16511 Direct/Indirect Cantilevered Linear Lighting Fixtures (Infinity Cornice & Lighting)

**Replacement Sections:** New text for previously included sections:

- 07190 Water Repellents (Chemprobe)
- 07311 Asphalt Shingles (CertainTeed)
- 07320 Roof Tiles (Ludowici clay tile and Celadon ceramic slate; replaces 07322 and 07325.)
- 09960 High-Performance Coatings (DuPont)
- 10500 Lockers (Penco Products, Inc.)

**Dianne Butler Joins BSD Staff**



A veteran of six years with the Construction Market Data Group (CMDG) of Cahners Publishing, Dianne Butler joined BSD in August with a wealth of experience in dealing with building product manufacturers. In her new position at BSD, Dianne will be working to expand and anchor the Industry Reviewer program described in the Summer 2001 edition of *LinkLine*. Building on her experience

with Architect's First Source for Products and Construction Market Data National Sales, Dianne will work with building product manufacturers to enhance their visibility in SpecLink while improving the accuracy and comprehensiveness of BSD's generic sections.

In addition to her experience with the construction industry,

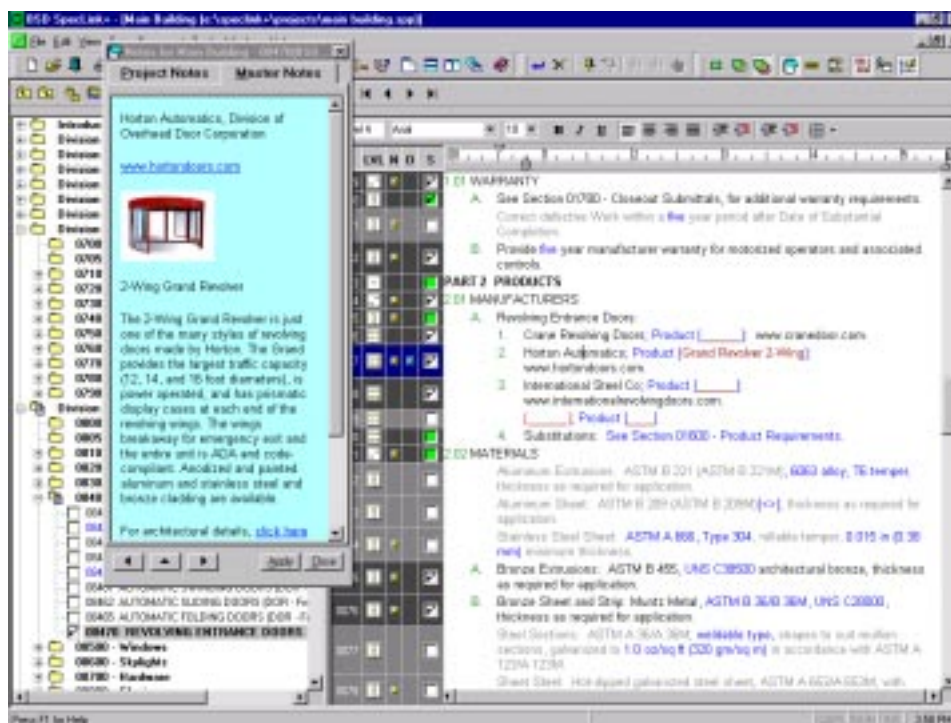
Dianne Butler has an extensive background in publishing and in the hospitality industry. Prior to joining CMD, Dianne was Southeast Bureau Chief for *In Motion Film and Video Magazine*, a product of Phillips Publishing International, Inc. Under her direction, the magazine expanded rapidly from markets in the south and southeast to include Texas and the Midwest. Dianne left after seven years, when rapid growth led to the magazine's relocation to the company's headquarters in Maryland.

Ms. Butler moved to Atlanta in the early 1980's to establish separate brand identities for the then-new Residence Inns and Embassy Suites Hotels of Holiday Inn International, serving as Director of Sales and Marketing. She has also worked as Director of Sales and Marketing for Regency Suites Hotel, an elegant small property in midtown Atlanta that was converted from

apartments to an all-suite hotel.

In her free time, Dianne enjoys all types of theatrical activity. An accomplished actress, she is currently appearing in a production of *Pygmalion* at Theatre in the Square in Marietta, Georgia.

The new Industry Reviewer program managed by Dianne Butler invites manufacturers listed in SpecLink to participate in the ongoing review and enhancement of the database. In addition, participants can provide thumbnail descriptions of their products, including a diagram or photograph, in the note attached to their name in the Part 2 list of manufacturers. The note may also include a hyperlink to the manufacturer's website. Dianne may be contacted at BSD via our toll-free 888-BSD-SOFT number, or via e-mail at [dbutler@bsdsoftlink.com](mailto:dbutler@bsdsoftlink.com).



## An Interview With...

### Mike Rodriguez, AIA, of Rodriguez Architects, Inc.

Rodriguez Architects, Inc. is a 6-person architectural practice in Coral Gables, Florida. They have been using BSD SpecLink for a little less than 2 years and are very pleased with the product. When asked if SpecLink saves him time and money, Mike Rodriguez replies "No question about it. I recouped a large part of my investment on its first use, for a six story hotel building." Describing his experience on that initial project, Mike says "I was thrilled with how easy it was to put together the specifications."

Rodriguez Architects created an office master they have now used on 5 projects by using the specifications for the original project, saved as a copy with a generic name. Each new project therefore builds on previous experience while taking full advantage of the quarterly updating. Asked about his experience with the updating process, Mike responds that installing them is "easy and foolproof."

The feature Mike Rodriguez likes best about SpecLink is the interactive linking. He refers to the built-in links as "dumb switches" that

suggest "which sections apply, don't apply or might apply, based on prior choices." Over 120,000 built-in links now populate the database, helping users complete the editing process more efficiently by turning on related text, excluding incompatible options, and highlighting suggestions for consideration. Mike was also complimentary about BSD's technical support. Although he says he hasn't needed to call support very much at all, "when I did need them, help was prompt and useful."

# 2001 Training Schedule

## **BSD SpecLink+** 1-1/2 days\* \$495

*September 10 - 11*  
*October 8 - 9*  
*November 12 - 13*  
*December 10 - 11*

- **AIA Members:** Earn 12 Continuing Education Units that qualify for Health, Safety, and Welfare hours.
- **CSI Members:** Earn 12 Education Contact Hours (ECH's) toward your CCS, CCCA, or CCPR Certification renewal.

## **BSD PerSpective** 2 days\* \$695

*September 12 - 14*  
*October 10 - 12*  
*November 14 - 16*  
*December 12 - 14*

- **AIA Members:** Earn 16 Continuing Education Units that qualify for Health, Safety, and Welfare hours.
- **CSI Members:** Earn 16 Education Contact Hours (ECH's) toward your CCS, CCCA, or CCPR Certification renewal.

## **BSD CostLink/CM (M32)** 3-1/2 days\* \$1295

*September 18 - 21*  
*October 16 - 19*  
*November 6 - 9*  
*December 4 - 7*

- **Government Contractors earn Mcaees Certification.**
  - **May qualify for Continuing Professional Competency credits.**

\*Class starts at 12:30 PM on Monday afternoon and ends at 5 PM on Tuesday.

\*Class starts at 12:30 PM on Wednesday afternoon and ends at 12:30 PM on Friday.

\*Class starts at 8:30 AM on Tuesday morning and ends at 11:30 AM on Friday.

*You can now look for BSD class schedules on our Internet site. Just go to [www.bsdssoftlink.com](http://www.bsdssoftlink.com) and go to the training page. You will find schedules, maps, hotel information, and information about Atlanta.*



Building Systems Design, Inc.  
1175 Peachtree Street, Suite 1900  
Atlanta, GA 30361

PRESORTED STANDARD  
U.S. POSTAGE  
**PAID**  
ATLANTA, GA  
PERMIT No.6613